

FOR LEASE

LAKE MEADOWS SHOPPING CENTER

35TH & Martin Luther King
Chicago, Illinois



JOIN THESE FINE RETAILERS

JEWEL FOODS

MILWAUKEE FURNITURE

SHORE BANK

WALGREENS

Property Specifications:

- **3 Spaces:** 6,000 SF (A-1b)
1,900 SF (C-2)
550 SF (B-7)
- **Net Rent:** \$22.00 PSF
- **CAM, Real Estate Taxes,
Insurance, Promotions:** \$8.75 PSF

**DK REAL ESTATE
SERVICES**
A DRAPER AND KRAMER COMPANY

Contact Information:

Joe Kunst
33 West Monroe, Suite 1900
Chicago, IL 60603
Phone: 312.795.2593
Fax: 312.795.2793
kunstj@draperandkramer.com

www.dkbrokerage.com

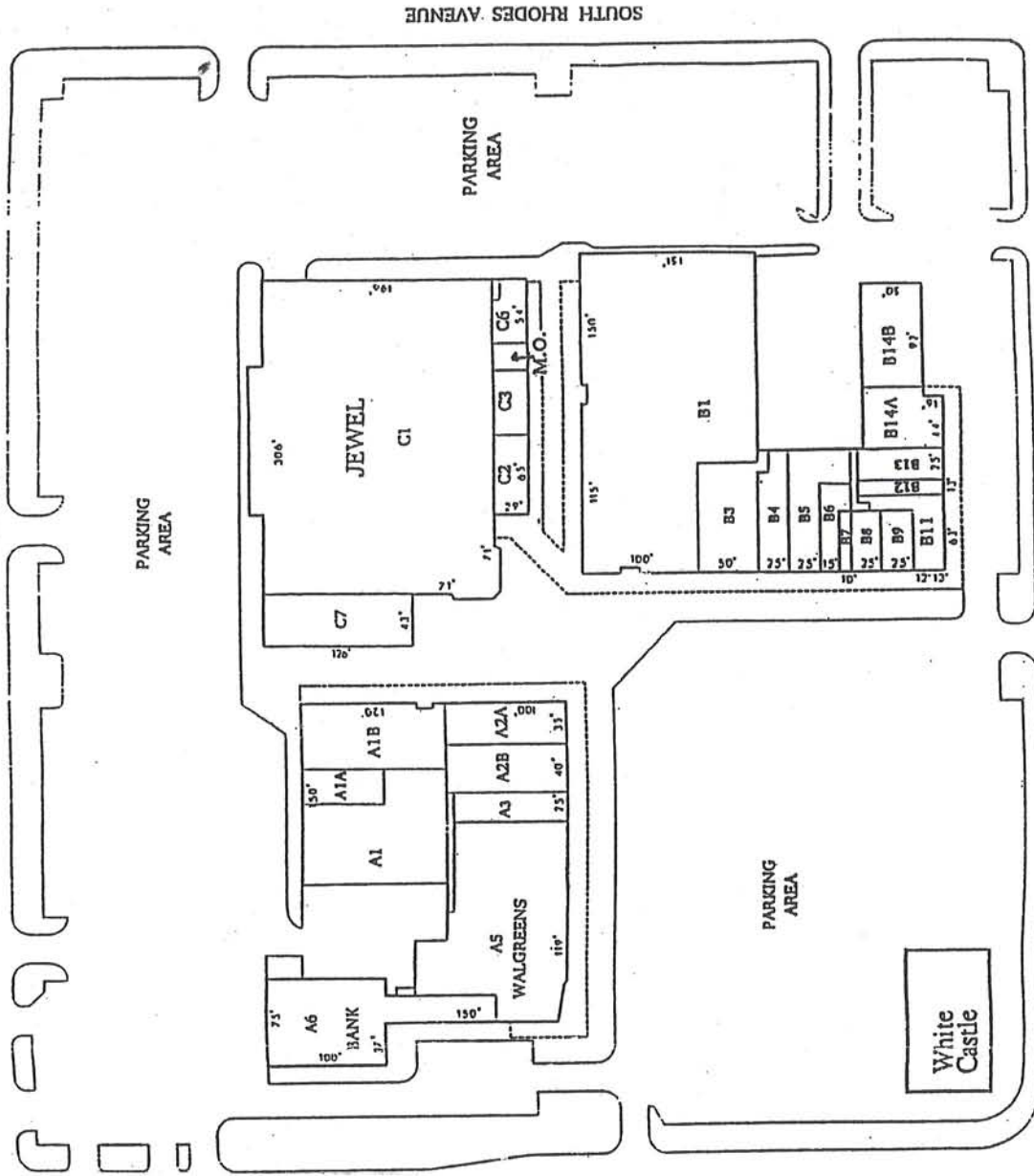
The information above has been obtained from sources believed reliable. While we do not doubt its accuracy, we have not verified it and make no guarantee, warranty, or representation about it. It is your responsibility to independently confirm its accuracy and completeness. Any projections, opinions, assumptions, or estimates used are for example only and do not represent the current or future performance of the property. The value of this transaction to you depends on tax and other factors which should be evaluated by your tax, financial, and legal advisors. You and your advisors should conduct an independent investigation of the property to determine to your satisfaction the suitability of the property to your needs.

LAKE MEADOWS SHOPPING CENTER

LAKE MEADOWS

E. 35th Street and S. Martin Luther King, Jr. Drive, Chicago, Illinois

EAST 33RD PLACE



EAST 35TH STREET



Space	Tenant	S.F.
A-1	Rainbow #1598	9,445
A-1a	Radio Shack	2,149
A-1b	A V A I L A B L E	6,000
A-2a	City Fashions	3,578
A-2b	Rainbow Kids	3,823
A-3	Rainbow Shop	2,342
A-5	Walgreens	16,905
A-6	Shore Bank	9,428
B-1	Milwaukee Furniture	35,451
B-3	Ashley Stewart	4,483
B-4/5	Q Beauty Supply	5,048
B-6	Maxim Nails	1,612
B-7	A V A I L A B L E	550
B-8	The UPS Store	1,262
B-9	Currency Exchange	1,262
B-11	Dunkin' Donuts / Baskin Robbins	2,122
B-12	Subway	881
B-13	Crickit Communications	1,702
B-14a	H&R Block	2,523
B-14b	Bronzeville Automotive Center	4,416
C-1	Jewel Food Store	49,786
C-2	A V A I L A B L E	1,900
C-3	Ortho Physical Therapy	1,313
C-5	Management Office	860
C-6	Second Ward Aldermanic Office	1,506
C-7	Simply Fashions	5,407
	Total GLA - Mall	175,754
Pad A	White Castle	17,278
8-1-10	Grand Total Square Footage	193,032